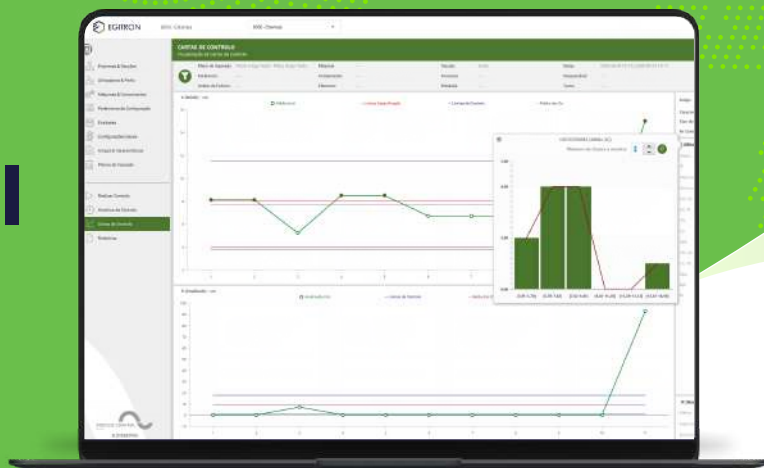




PROCESS CONTROL
EGITRON

EGITRON Process Control Software (EPC)

Software for Statistical
Process Control



The EGITRON Process Control is a high performance software

which aims to help any company implement a rigorous Statistical Process Control policy based on control charts.

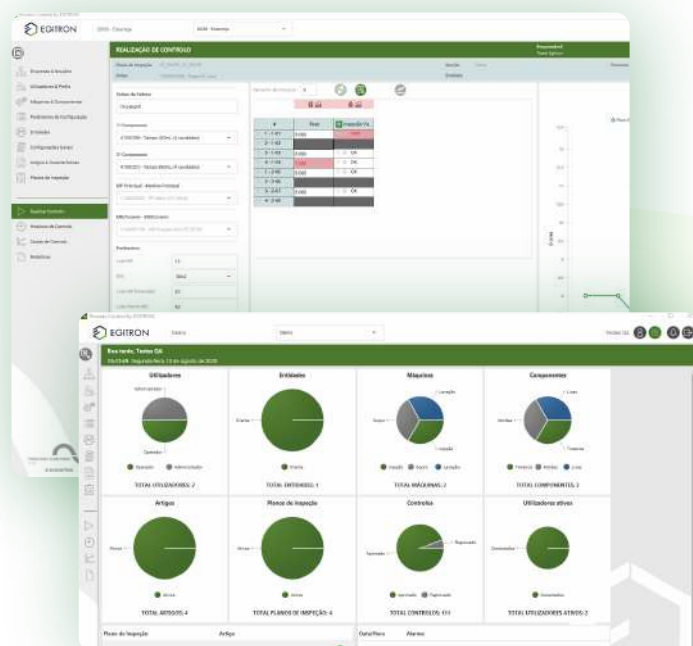
Its modular architecture, in conjunction with the new programming paradigms used, make the EGITRON Process Control **an exceptional Quality Control tool, essential in preventing of non-conformities, and a precious support to Business Management.**

This application was **developed based on more than 25 years of experience in the creation and implementation of software for Statistical Process Control.**

To this experience, it was add a wide range of new technologies, development according to Agile Software Methodology, and precious inputs from our customers and partners.

The EGITRON Process Control Software is an application **capable of responding to the needs of any business sector and company, regardless of its dimension.**

Extremely flexible and very simple to use, **it allows to identify, trace and resolve any non-conformity detected in a production process.**



Statistical Process Control

Key benefits

- Real-time production feedback;
- Reduction of complaints;
- Waste reduction;
- Increased operational efficiency;
- Better use of resources;
- Reduction of rework;
- Reduced manual inspections;
- Increased productivity;
- Costs reduction;
- Consistent production and quality;
- Increased customer satisfaction;
- Increased margins and profitability.

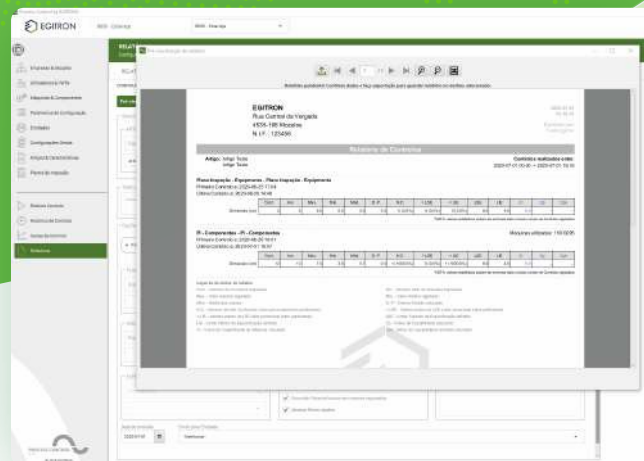


PROCESS CONTROL
EGITRON



Main features

- Security: encrypted and authenticated communication;
- User-friendly environment: a revamped, intuitive and pleasant interface, allowing the user to perform more tasks with fewer clicks;
- Technologically advanced: modern platforms and agile development methodologies;
- High level of support: structured and high availability client support;
- Modular: agile integration of functionalities and adapted to the client's needs;
- Ease of analysis and processing of stored data: access to information related to reports in an efficient and simple manner, and with great ease of integration and sharing of information;
- Controlled access: different levels of permissions; definidos por utilizador e protegido por palavra-chave;



- Full and flexible traceability;
- Multi language: available in Portuguese, English, French and Spanish, and it is easy to add new languages; each user selects his or her working language;
- Multi-platform: Windows, Linux or Mac;
- Data export: PDF, Excel or other formats;
- Integration: easy integration with third-party software through API Rest (ERP's SAP, M3, etc.); specific integrations require budget adjustment;
- Cloud Service: possibility of Web Servers and Database in the Cloud (optional).

Main functionalities

- Multi-company, with data differentiation by Industrial Unit, Section, Process and Shift;
- Unlimited registration and management of Machines and its Components, with the possibility of Subcomponents supervision and their correlation in Controls;
- Automatic data acquisition from equipments with USB, TCP/IP serial ports, file reading, etc (it requires technical validation by EGITRON);
- Fully flexible configuration of Articles, Features, Inspection Plans, etc;
- Control charts: XR, XS, P e I-MR;
- Statistical calculations on control charts (Mean, Standard Deviation, Cp, Cpk, etc.);
- Frequency histograms;
- Control of the inspection time plan with alert notifications;
- Calculable and editable control limits;
- Shift management (optional);
- Alarm notifications with the possibility of sending automatic emails and/or communication through Slack or Microsoft Teams;
- Management of alarm causes, corrective actions and non-conformities;
- Replacement checks after corrective action;
- Print complete reports, history, statistical values, listings, etc..



PROCESS CONTROL
EGITRON



Minimum requirements

The minimum requirements specify the mandatory characteristics for the installation and execution of the software and below them, its installation, execution or stability is not guaranteed. These requirements are based on the assumption that the main task of the computers will be the execution of this software, so if there are other competing applications, these requirements are no longer a guarantee of the systems stability, and any problems arising from this are the entire responsibility of the client.

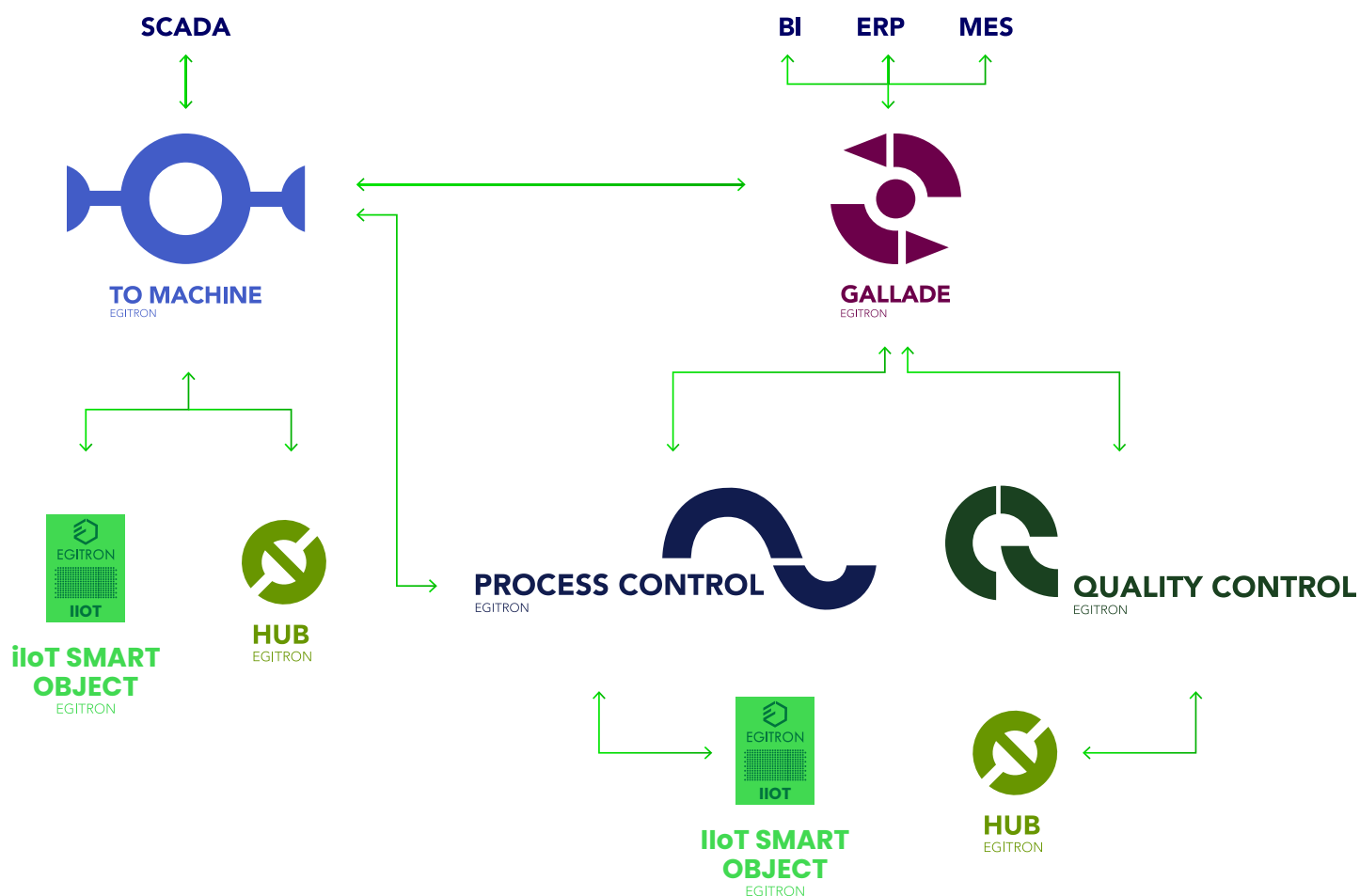
	Web Server (1)	Database Server (1)	Client PC
HARDWARE			
CPU	Intel Pentium G4400 @ 3.30GHz or equivalent	Intel Pentium G4400 @ 3.30GHz or equivalent	Intel Pentium G4400 @ 3.30GHz or equivalent
Memory (2)	8GB	8GB	2GB
Disc (2)	5GB	20GB	1GB
Network	Gigabit Ethernet	Gigabit Ethernet	Ethernet ou WiFi 802.11n
Resolution	-	-	1280x720
SOFTWARE			
Operating system (3)	Microsoft Windows Server 2012 R2, Windows 7 Professional or Ubuntu 18.04	Microsoft Windows Server 2012 R2, Windows 7 Professional or Ubuntu 18.04	Microsoft Windows 7 Home
Database	-	PostgreSQL 11 (recomendado) or Microsoft® SQL 2016 Standard	-
Java Runtime Environment	JRE 1.8	-	JRE 1.8

Notes:

- (1) Valid for use by a maximum of 5 simultaneous clients. The Web Server and Database Server can run on the same physical server, in which case, the use of separate physical disks for each service is suggested.
- (2) RAM memory and free disk space depends on the processes used simultaneously and the type of application usage. The suggested values are based on average usage. If there are more processes running on the same machine and more intensive use of data, the memory and disk space should be increased.
- (3) For an Ubuntu installation it is mandatory to use PostgreSQL.



PROCESS CONTROL
EGITRON



This document can be changed without previous notice | v3.0.1